

Writing Poetry: A Shape Poem (8W5)

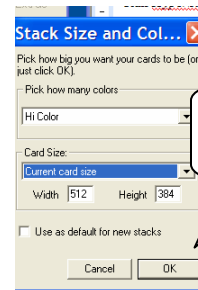
Task: Write a “shape poem” where the words on the page evoke the central image of the poem.

Step 1: Run *HyperStudio*.

Step 2: Click on the purple block to **Create a New Stack**.



Step 3: In the *Stack Size and Colour* dialogue box, select a card size by clicking on the down arrow. (800 x 600 works well for this activity)

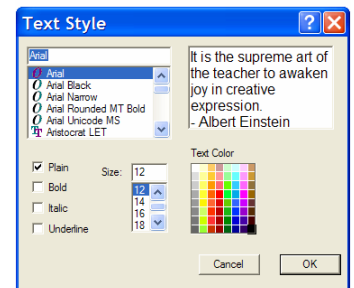


Step 4: You should now see a blank card. You will need to get the tools palette before you begin your work. To get the palette, click and hold down the left mouse key on **Tools** in the menu at the top of the workspace. The tools palette will appear. Drag down and to the left. Release the mouse when you have positioned the tools palette.



Step 5: To type your shape poem, click on the painted text tool, the letter T in the bottom left of the tools palette. Painted text allows you to click anywhere in the workspace and begin typing.

Step 6: To select a text style, double click the letter T. The *Text Style* dialogue box opens. Here you can select the font, style, size and colour of the text.

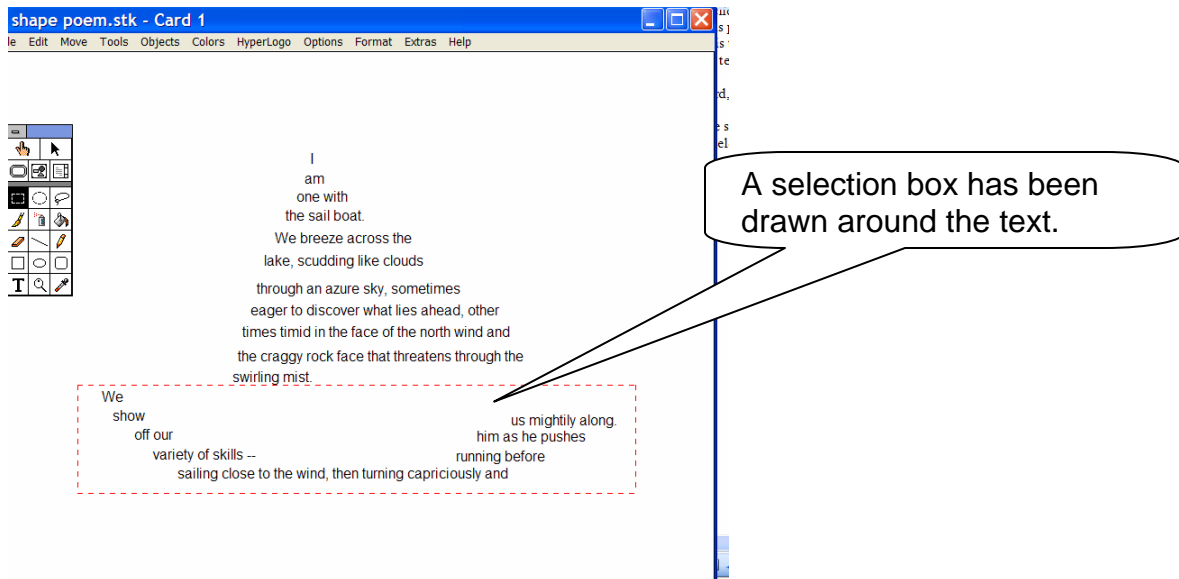
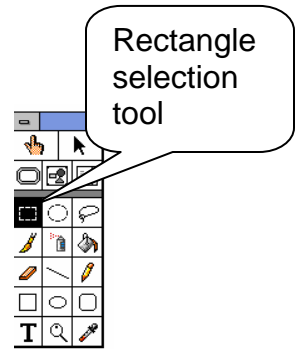


A note about “Painted Text”:

Painted text works well for this activity, because you can click anywhere in the workspace and begin typing. In this way, the text is easy to position for your shape poetry. It behaves differently than text in a regular word processing program. This text can be edited by backspacing, but only until you click somewhere else. Then the text becomes part of the background of the card and can no longer be edited.

Once the text is “painted” on the card, you can change it in several ways:

- Move the text by using the rectangle selection tool (the “dashed” rectangle just above the paintbrush). Click on the rectangle selection tool; then draw a selection box around the text you wish to move. The box appears as a red, dashed rectangle. When you place your cursor over the box, it becomes a “cross with arrows”. You can now move the text by clicking and dragging it to its new position.



- Delete text by drawing a selection box around it; then press the **Delete** key on the keyboard.
- Erase text by clicking on the eraser tool; then move the eraser over the text to erase it.

Step 7: Click in the workspace. Type the text. Continue clicking and typing to create the text in the shape of your poem.

Step 8: Save and print your file, as instructed by your teacher.